

Scan the QR codes below to find out more



Axis AX Brochure



PerfectSync Brochure



DynamixSmoke Brochure



Fire Telephones Brochure



Complete this **short survey**
for a chance to win a
\$100 Amazon gift card!



Fire protection
solutions for
a safer future



Email: enquiries@advancedco.com
Web: www.advancedco.com



Advanced



Advanced Fire



NBS Source
PARTNER

Axis AX and all other Advanced product brands are trademarks of Advanced Electronics Ltd. All rights reserved.

A **Halma** company



Email: SalesFireUS@harding-tech.com
Web: www.harding-tech.com



Harding Technologies



Advanced fire safety peace of mind

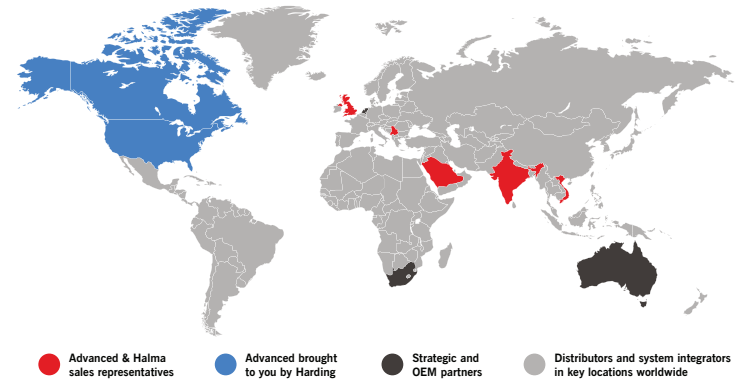
At Advanced, we're committed to creating a safer future. Our wide range of fire safety solutions are trusted for their performance, quality and ease of use, and protect people and property in more than 80 countries across the globe.

Our products are shaped by decades of research and development expertise as well as ongoing investment in new technologies.

Everything we deliver is rigorously tested and approved to exacting quality standards. You can be confident in your choice of Advanced products for many years to come. We are dedicated to providing excellent service and have an international network of offices and agents to help you access sales support with ease – wherever you are in the world.

In North America, our exclusive partner is Harding, who offer training, support and advice on our products.

For added reassurance, Advanced is part of the safety sector of Halma plc. This global group of life-saving technology companies has a clear purpose to grow a safer, cleaner, healthier future for everyone, every day.




A Halma company



Discover Axis^{AX}

The versatile Axis AX range comprises addressable panels, audio systems, command centers and a comprehensive range of devices to bring you performance, quality and ease of use.

Its highly adaptable, modular nature makes it suited to a wide variety of installations – from the smallest, simplest sites to the most complex and demanding large-scale projects. And with dedicated customer support and technical advice on hand through our North American partner, Harding, you can enjoy Advanced fire safety peace of mind.

Discover just some of the possibilities on our booth, where we're showcasing a selection of Axis AX configurations. These range from a simple fire alarm system suitable for small stores or coffee shops, to versatile command centers for high-rise buildings that require audio and telephone capabilities.



Harding Technologies is the exclusive distribution partner of Advanced fire products in North America.

Since 1969, Harding has built its reputation as a developer and distributor of leading-edge electronic products for communications, life safety, oil and gas, biomedical, agricultural, and heavy equipment industries.

When you buy your Advanced equipment from Harding, you're accessing versatile fire safety technology, trusted in over 80 countries, backed up by Harding's expertise, customer service and commitment to quality.

The Harding sales, customer service and technical support teams are ready to assist you with specifications for projects, quotations for bills of materials and product applications.

Please call toll-free for advice and support and to find out about becoming a Harding/Advanced distributor: (1) 866-462-7100.



Installations requiring a simple fire alarm system

Summary

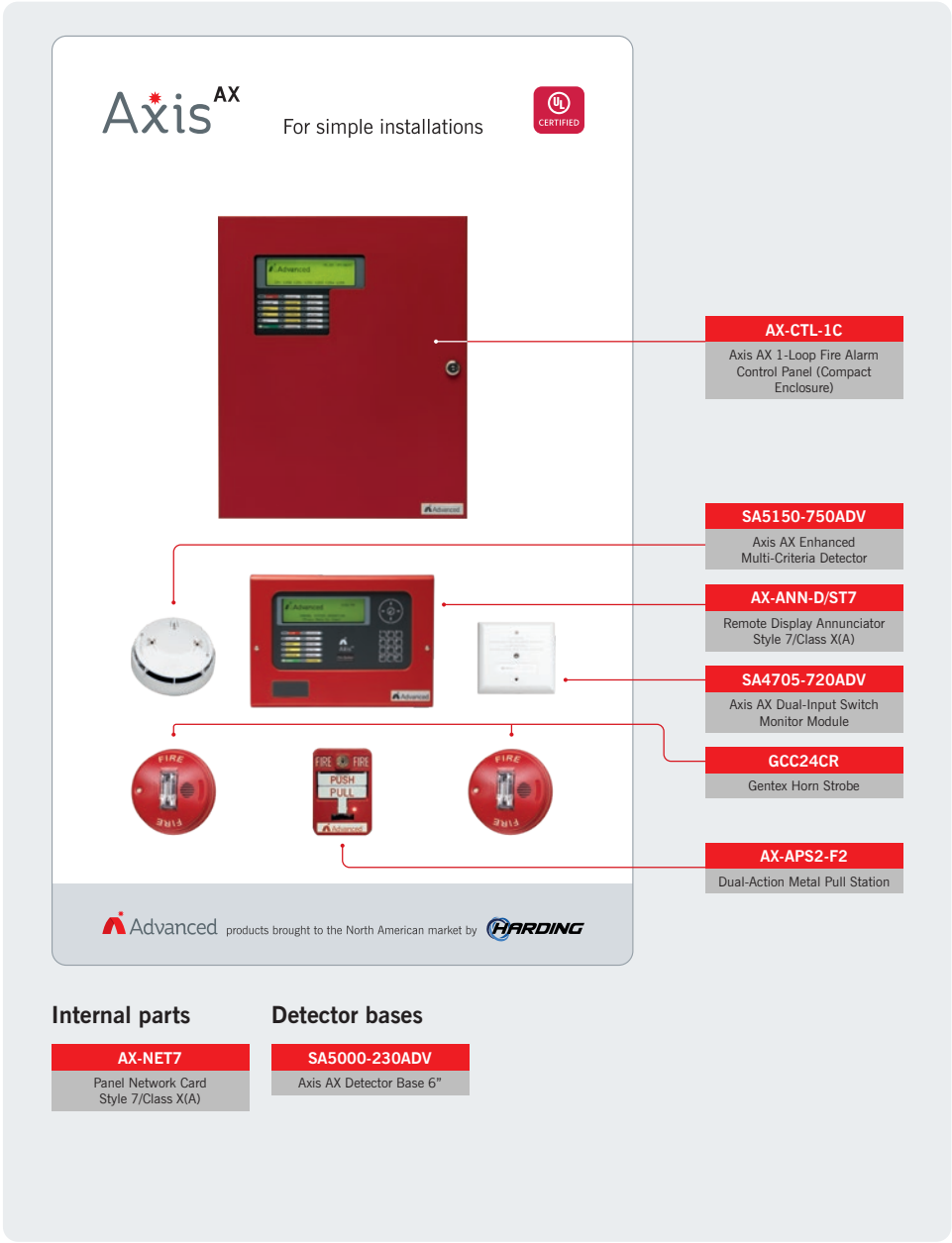
- A single-loop analog addressable fire alarm control panel.
- Fully featured display remote network annunciator with 240 x 64 graphical LCD and 12 status LEDs.

Key features

- Fully featured user/operator interface control center with 240 x 64 graphical LCD, 18 status LEDs and eight control buttons.
- One signalling line circuit with unique addressable device sub-addressing and two synchronized notification appliance circuits.

Typical installations

Designed to suit a wide variety of smaller sites, the single-loop fire alarm system is ideal in standalone fire alarm applications. Its power and versatility also allow the fitting of a network card so it can be added to an existing network or as part of a new multi-node installation.



Installations requiring a fire alarm system with audio capabilities

Summary

- Analog addressable fire alarm control panel with integrated emergency one-way voice communications.
- Fully featured peer-to-peer remote network annunciator with 240x64 graphical LCD, 12 status LEDs and eight control buttons.

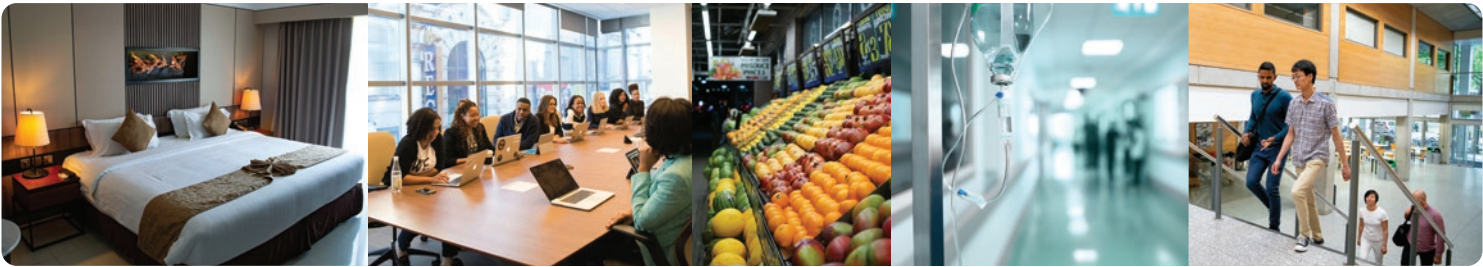
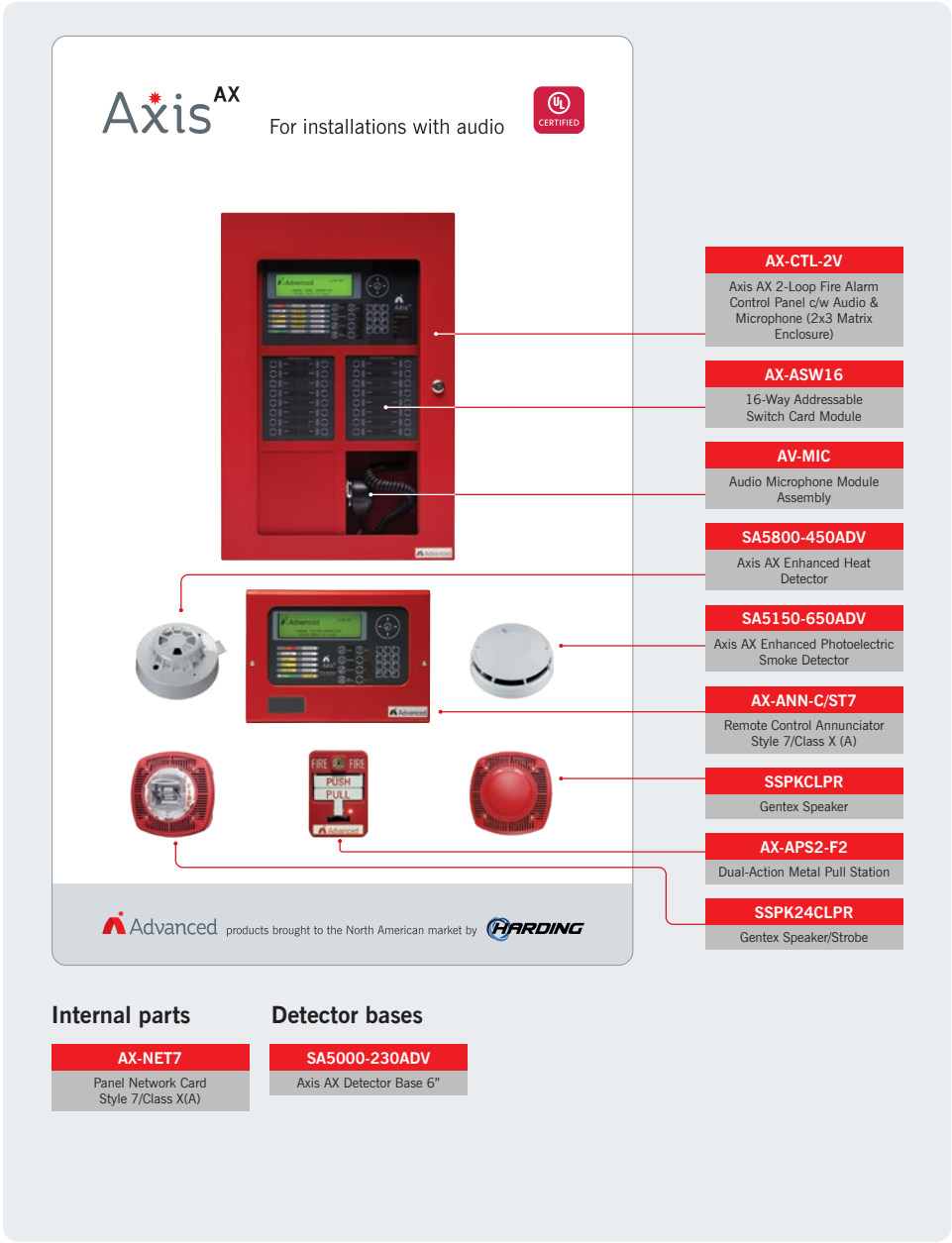
Key features

- Fully featured user/operator interface control center with 240 x 64 graphical LEDs, 18 status LEDs and eight control buttons.
- Switch LED control modules for audio and other installation status/control requirements.
- One, two or four signalling line circuits with unique addressable device sub-addressing and up to four synchronized notification appliance circuits.
- Emergency one-way audio communications with dual 40W amplifiers, accommodating a live voice communication microphone.

Typical installations

Designed to support a wide variety of small- to medium-sized fire alarm system applications requiring integrated audio, the system can be used in standalone, single-audio applications, or as a control center for a true peer-to-peer multi-network fire alarm installation.

In addition, the system is fully networkable, incorporates dedicated switch cards programmable for most applications using the in-built 80W audio amplifier designed with PerfectSync audio synchronisation.



Complex fire alarm installations requiring audio and telephone capabilities

Summary

- Analog addressable pre-configured/modular 3x3 fire alarm command center.
- Includes integrated emergency one-way and two-way voice communications and smoke control with post-fire smoke purging.

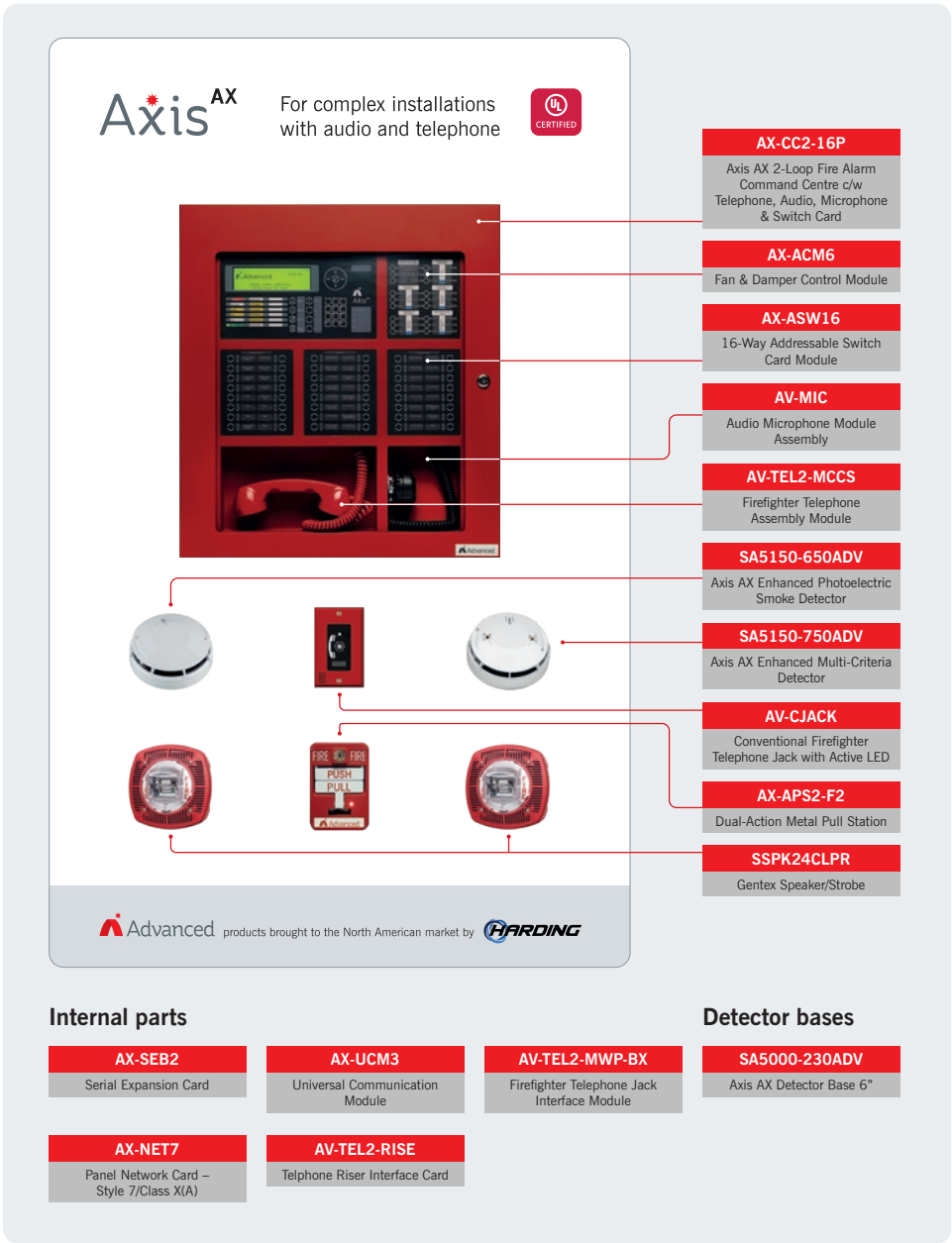
Key features

- Fully featured user/operator interface control center with 240x64 graphical LCD, 18 status LEDs and eight control buttons.
- Switch LED control modules for audio, firefighter telephone, disabements and smoke/purge control.
- One, two or four signalling line circuits with unique addressable device sub-addressing and up to four synchronized notification appliance circuits.
- Emergency one-way audio communications with dual 40W amplifiers, accommodating a live-voice communication microphone.
- Two-way firefighter emergency telephone.

Typical installations

Designed to support a wide variety of medium-sized applications, the pre-configured/modular 3x3 fire alarm system applications or as a command center for a true peer-to-peer multi-network fire alarm installation.

It can be supplied as standard with in-built firefighter's telephone, PerfectSync audio synchronization and DynamixSmoke, supported by the latest in Windows-based PC configuration tools.



High-rise installations requiring a complete fire alarm system

Summary

- Analog addressable pre-configured/modular 3x5 fire alarm command center.
- Integrated emergency one-way and two-way voice communications and building smoke control with post-fire smoke purging.

Key features

- Fully featured user/operator interface control center with 240 x 64 graphical LCD, 18 status LEDs and eight control buttons.
- Switch LED control modules for audio, firefighter telephone, disabements and smoke/purge control.
- One, two or four signalling line circuits with unique addressable device sub-addressing and up to four synchronized notification appliance circuits.
- Integral networked strip printer for the printing of all installation status changes.
- Emergency one-way audio communications with dual 40-watt amplifiers, accommodating a live voice communication microphone and two-way firefighter emergency telephone.

Typical installations

Designed to suit a wide variety of large-sized applications, the pre-configured 3x5 fire alarm command center is modular listed and can be used in standalone, single fire alarm system applications, or as a dedicated remote command center for a true peer-to-peer multi-network fire alarm installation.

